



UNIVERSITY OF South Carolina

**REWIND FAST FORWARD:
INNOVATION IN A HISTORIC CAMPUS CORE**



BOUDREAUX + LITTLE
DIVERSIFIED ARCHITECTURAL CONSULTING



JUNEAU
CONSTRUCTION COMPANY



April Barnes, EdD

Assistant Vice President
of University Housing



Thomas Carlson-Reddig "TCR",

AIA, LEED AP

Community Practice Leader



Heather Mitchell, AIA

President
Architecture



UNIVERSITY OF South Carolina

- Introduction to the USC Housing System
- Key Challenges
- Residential Student Experience

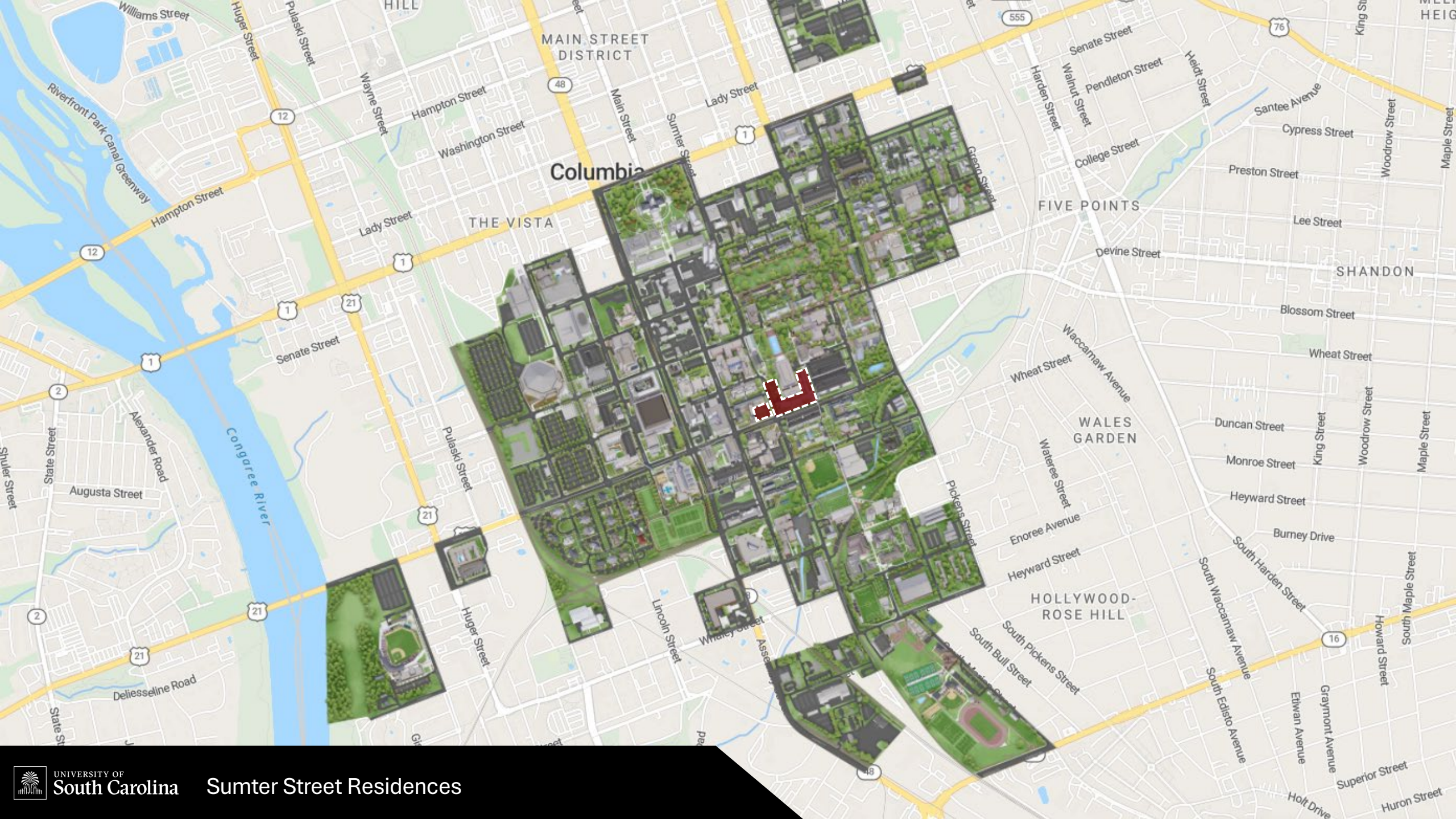




UNIVERSITY OF South Carolina

- 40,000 Plus Students
- 9991 Beds
- 7,829 First-Year Students
- Continued Growth of First-Year Class





Columbia



SUMTER STREET

BLOSSOM STREET



**2.3 Acre
Total Site**



**\$161 Million
Construction Cost**



1086 Beds

HONORS COLLEGE



**New 6 Story
Residential Building
55,400 square feet**

SUMTER STREET RESIDENCE



**New 6-7 Story
Residential Buildings
240,750 square feet**









COLLABORATIVE PARTNERSHIPS

STRATEGIC PRIORITIES

DECISION MAKING



UNIVERSITY OF
South Carolina

Historic USC Campus

EXISTING CONDITIONS



USC - Sumter Hall

EXISTING CONDITIONS

USC SUMTER STREET RESIDENTIAL

SITE CONTEXT: CAMPUS

SPECIAL COLLECTIONS LIBRARY

HONORS RESIDENCE HALL

SUMTER STREET

MARION ST. PROMENADE

THOMAS COOPER LIBRARY

MCBRYDE RESIDENCE HALL

BLOSSOM STREET



UNIVERSITY OF
South Carolina

BOUDREAUX

LITTLE
DIVERSIFIED ARCHITECTURAL CONSULTING



JUNEAU
CONSTRUCTION COMPANY

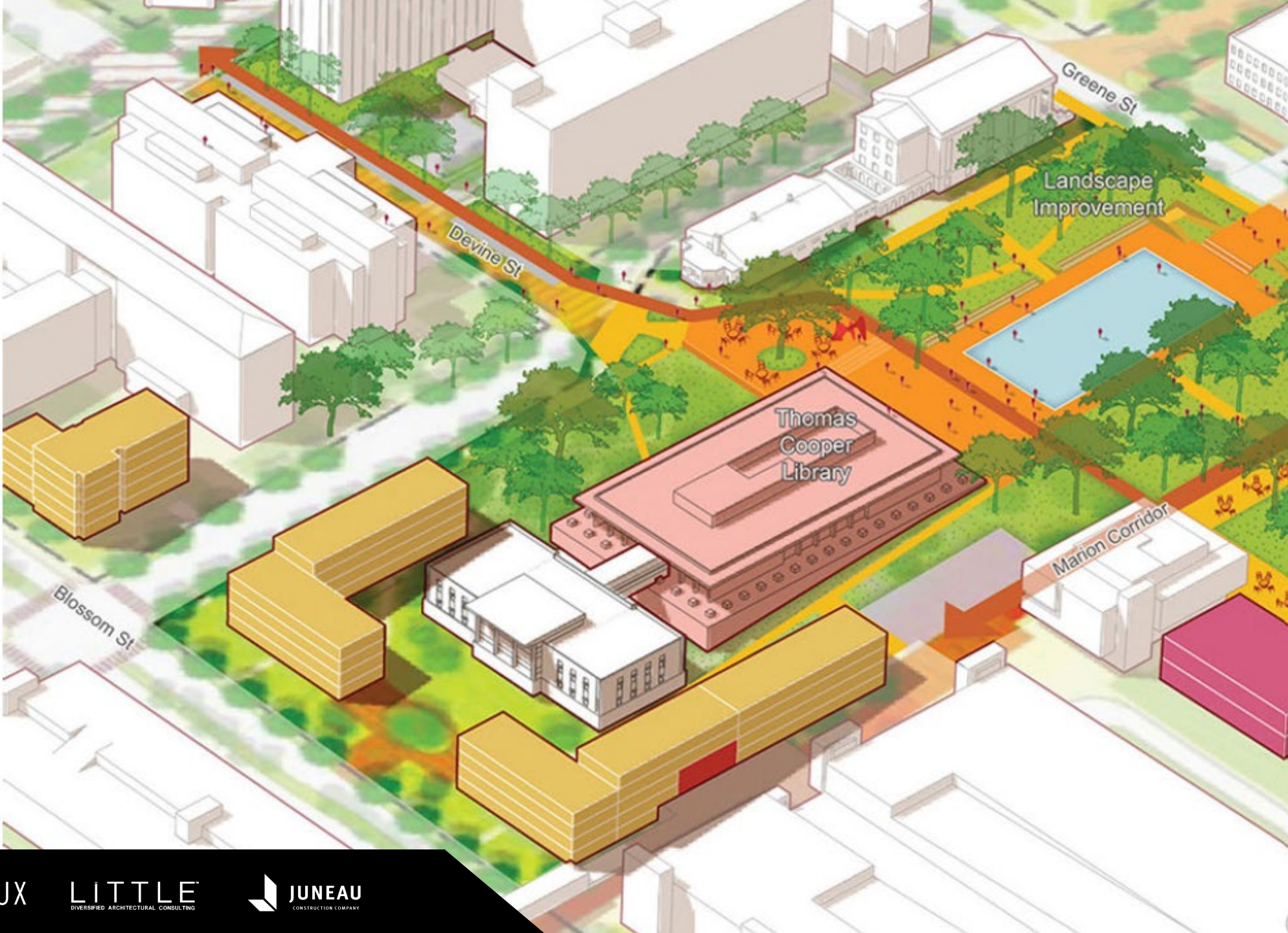


PROJECT STAKEHOLDERS

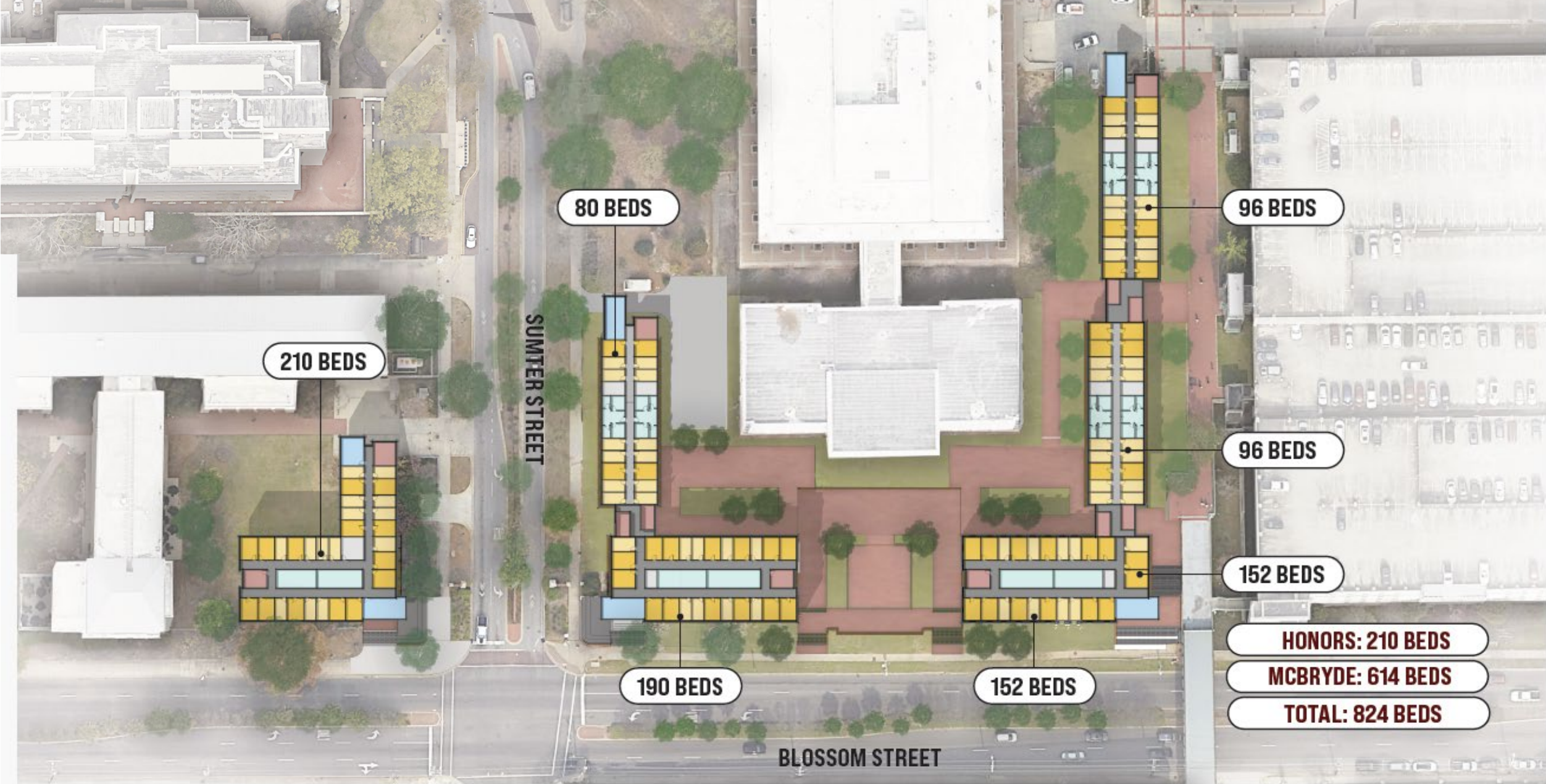
- USC Campus Architect
- USC Facilities Staff
- USC Housing Leadership
- Housing and LLC Staff
- Student Engagement
- USC Student Affairs
- Finance Department
- SC Office of the State Engineer
- USC Design Review board
- City of Columbia Planning Department
- City of Columbia Design/ Development Review Commission
- General Contractor (Juneau)



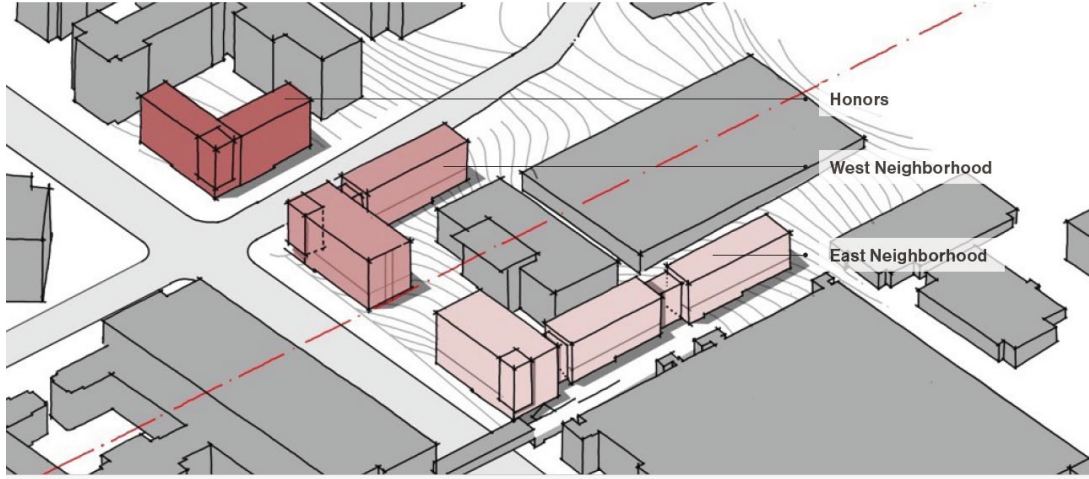
IMPROVE STUDENT LIFE EXPERIENCE



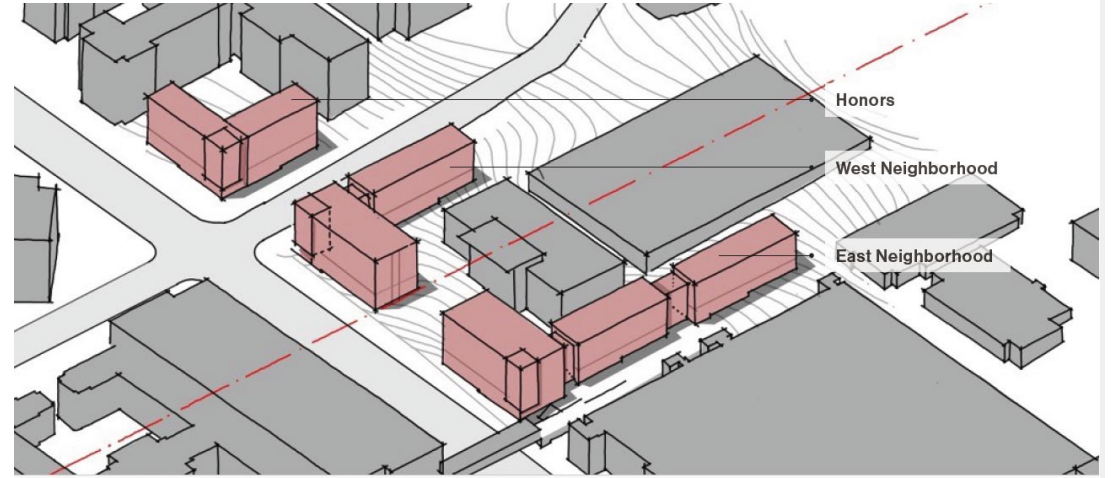




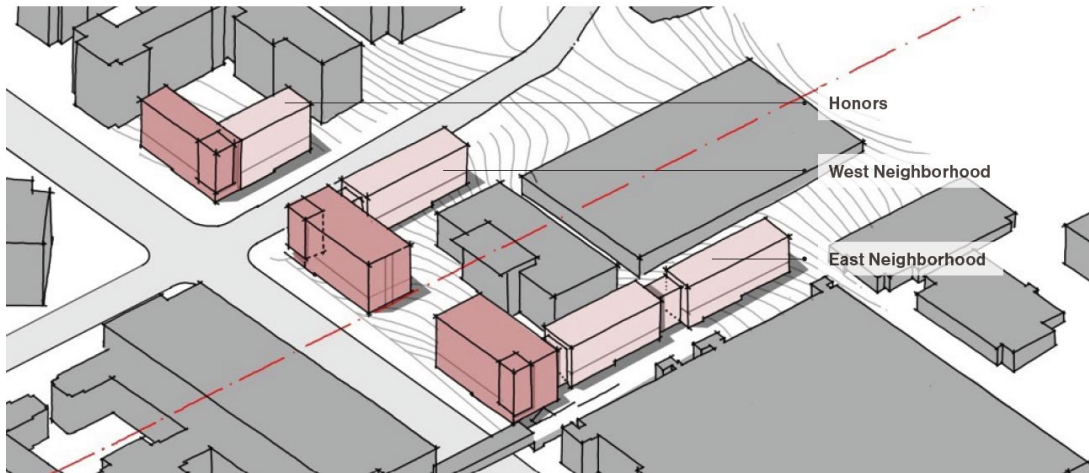
Celebrating USC
Connecting to Campus - Neighborhoods



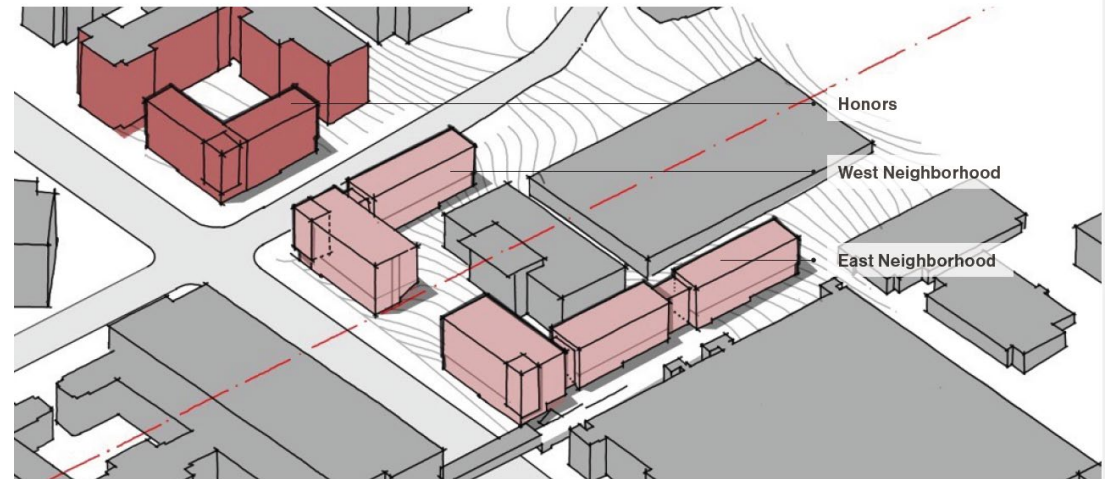
Celebrating USC
Connecting to Campus - Unified Language



Celebrating USC
Connecting to Campus - Blossom Promenade



Celebrating USC
Connecting to Campus - Honors & Library Precincts



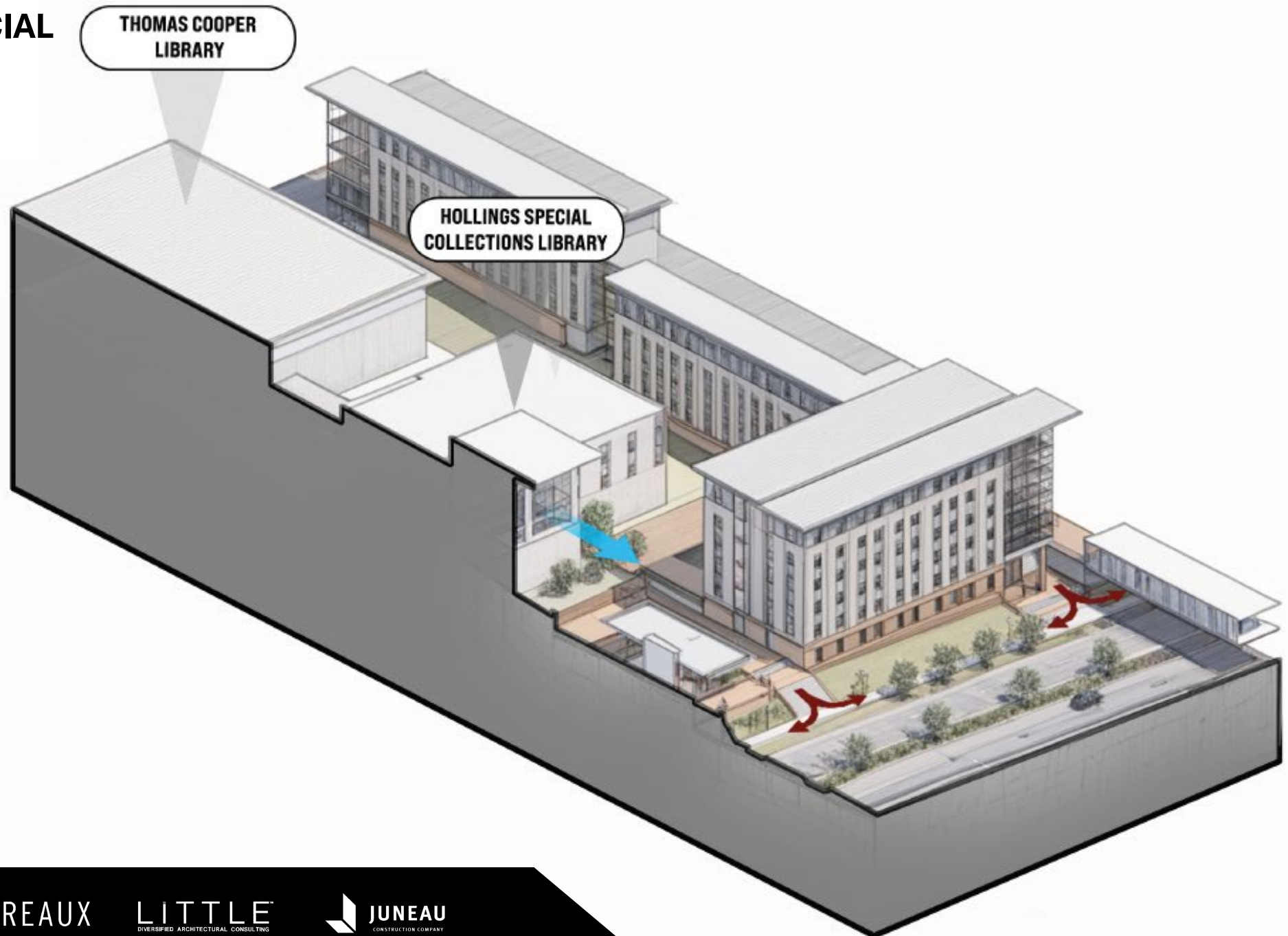
POTENTIAL HUB



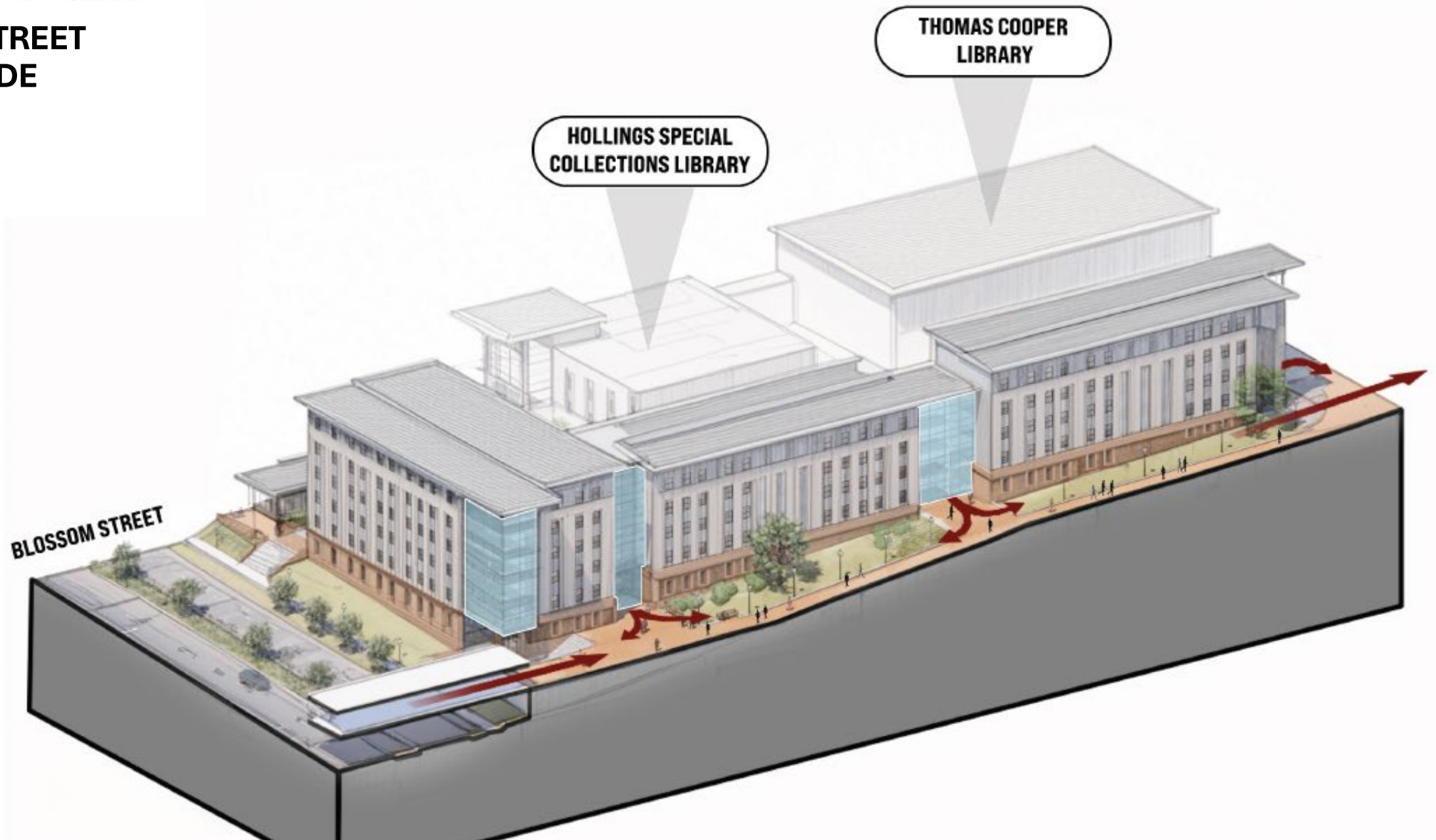
POTENTIAL HUB



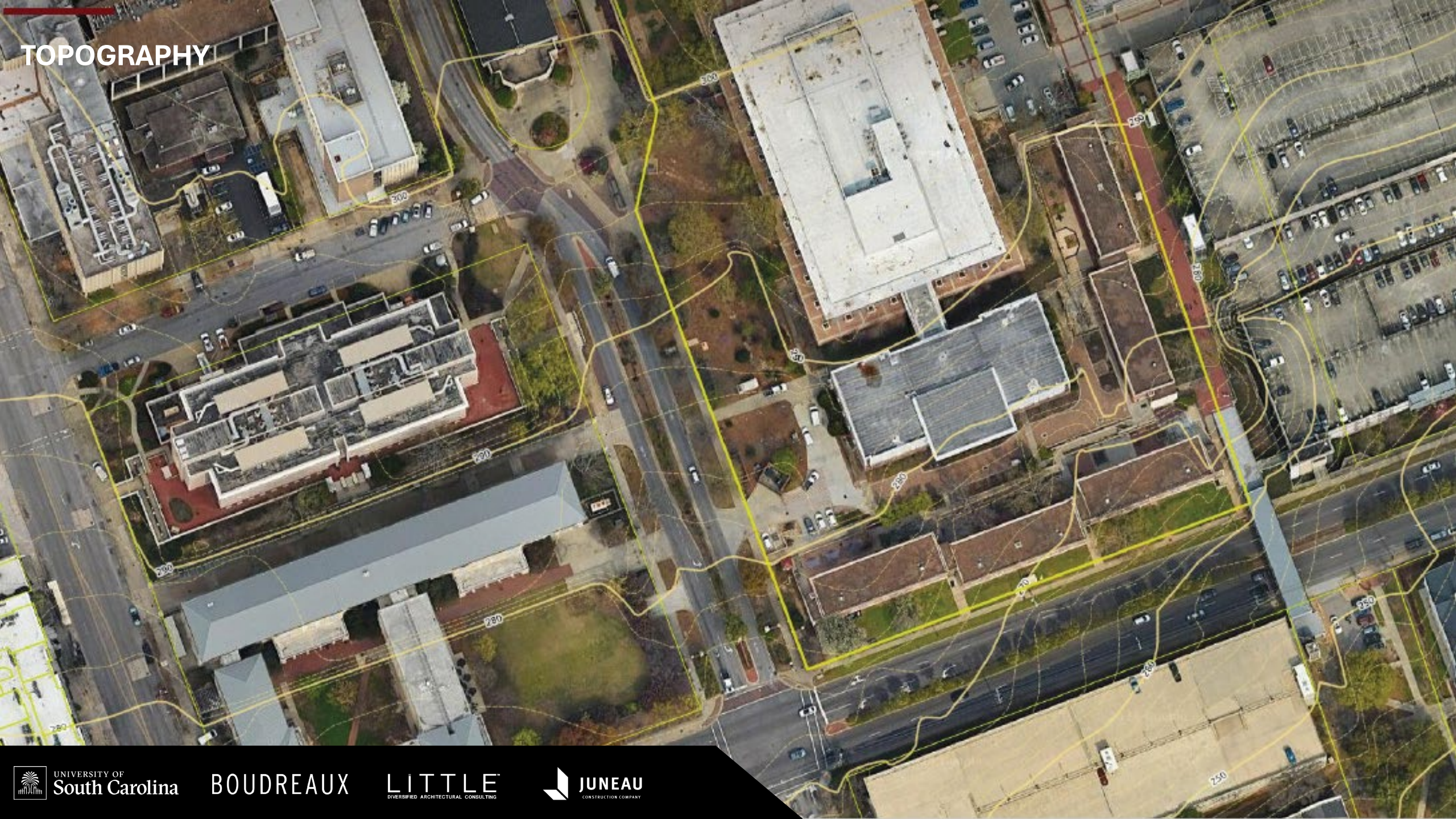
VIEWS FROM SPECIAL COLLECTIONS



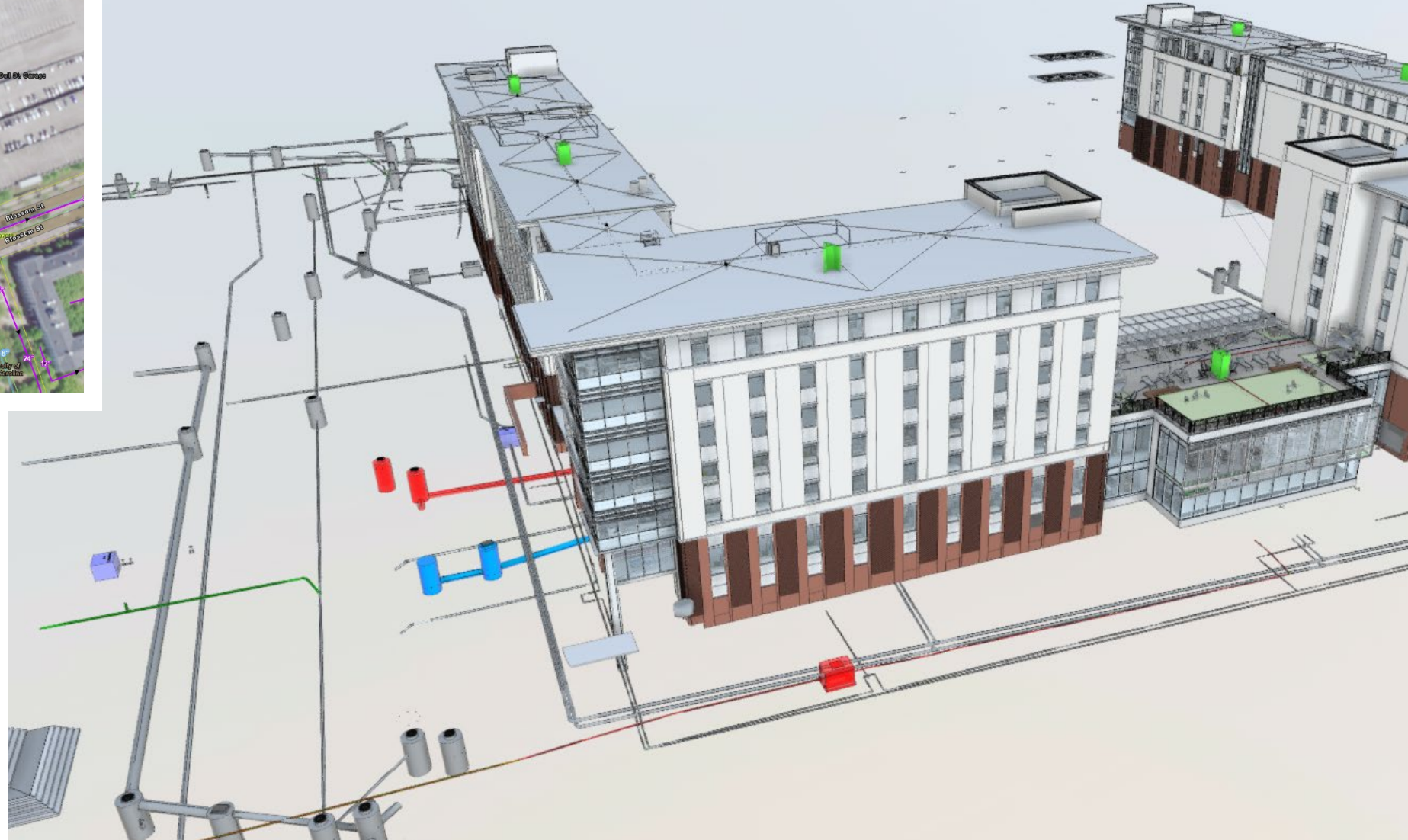
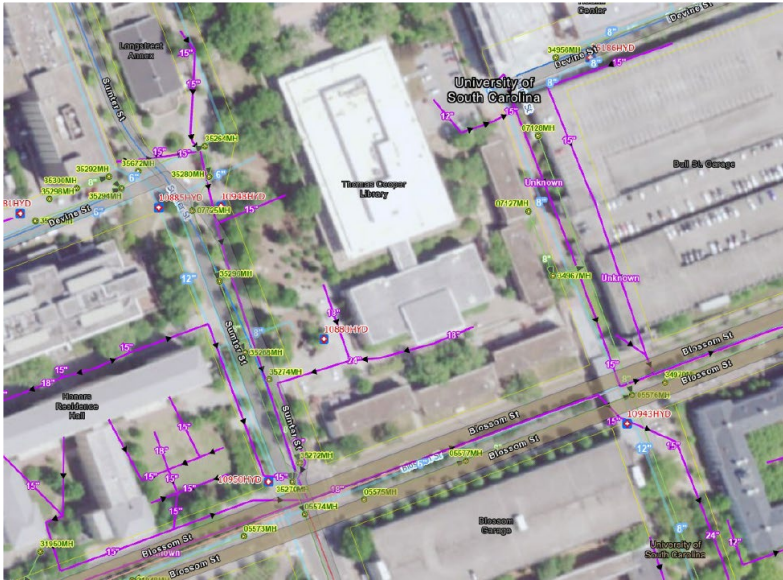
MARION STREET PROMENADE



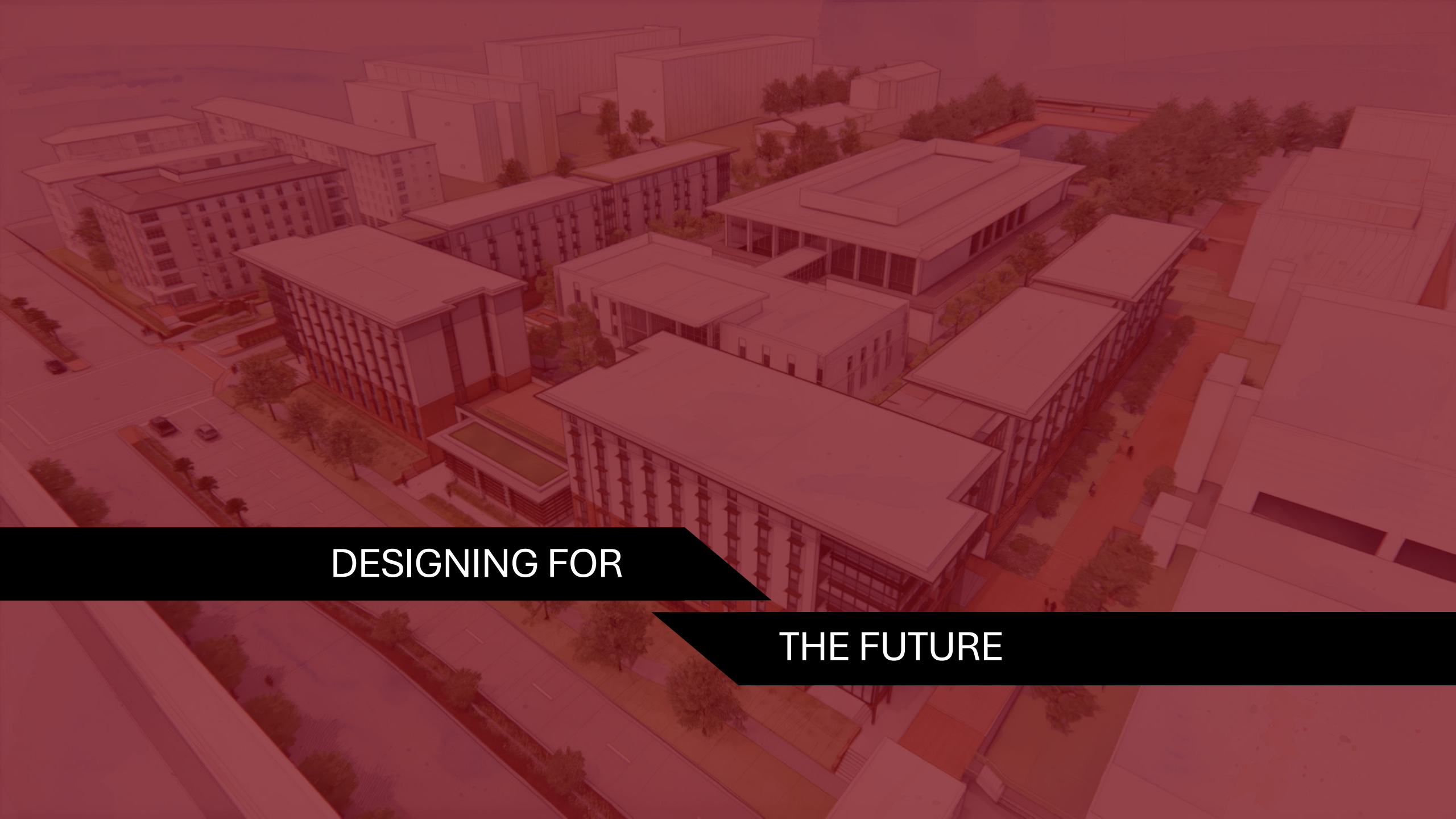
TOPOGRAPHY







EXISTING UTILITY REPLACEMENT & CAMPUS CONNECTIONS



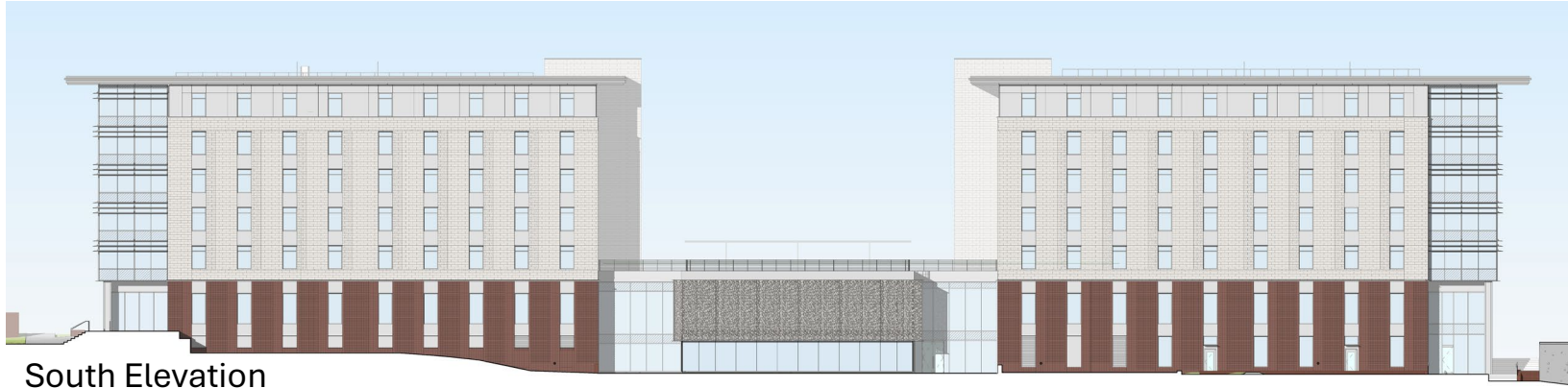
DESIGNING FOR

THE FUTURE

GATEWAY PROJECT



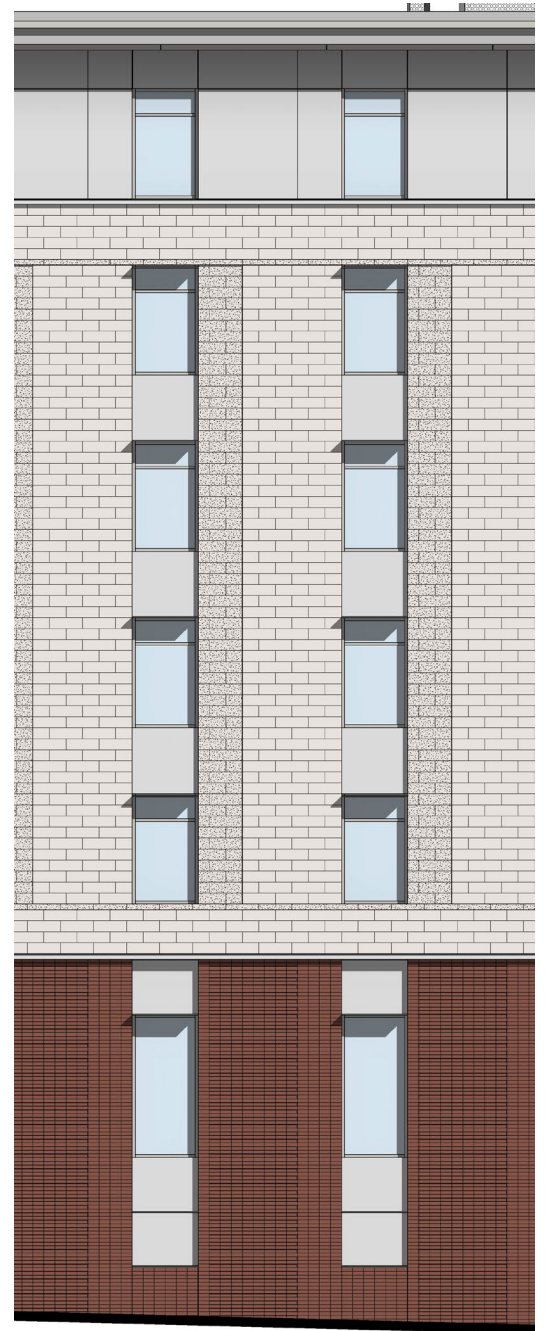
GATEWAY PROJECT



South Elevation



West Elevation



Façade detail

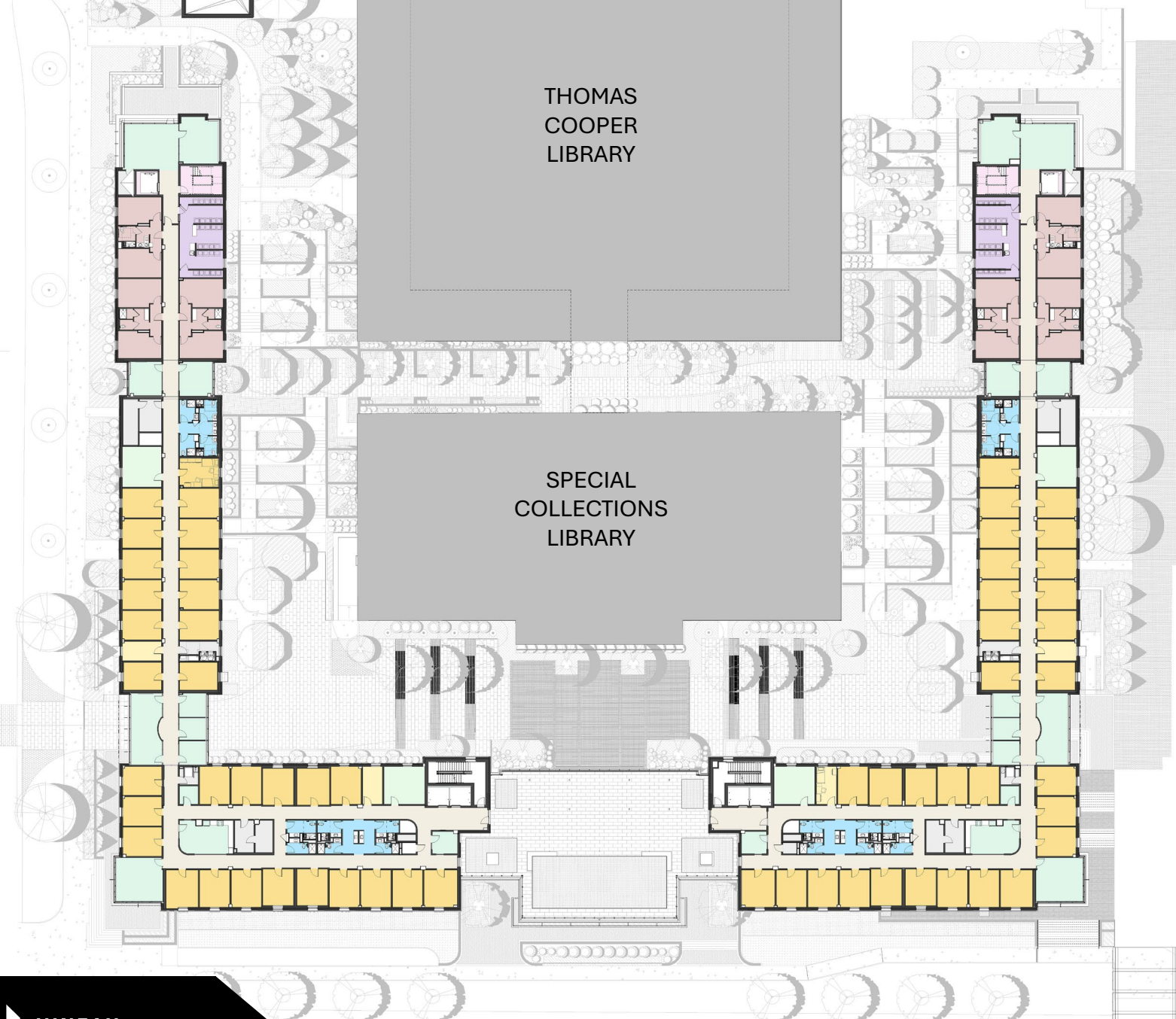
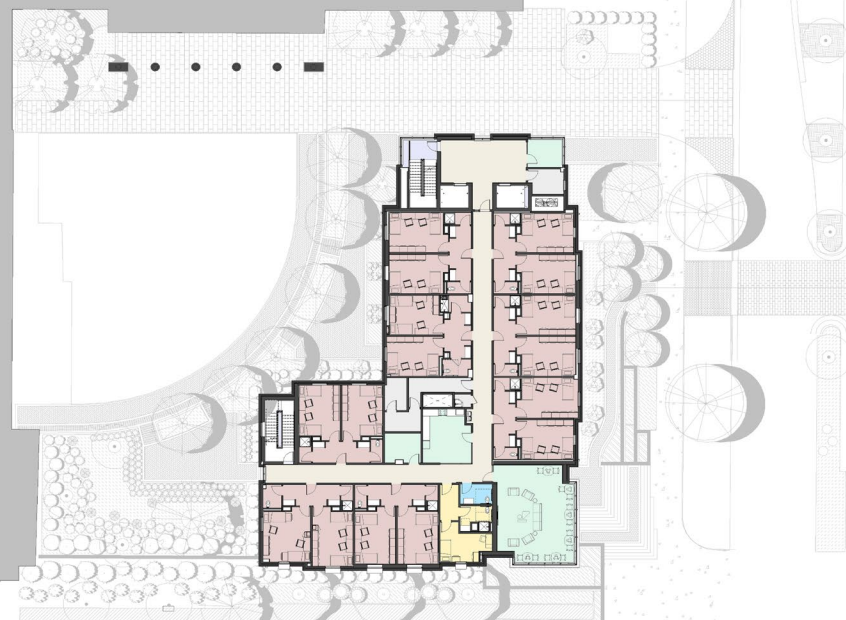






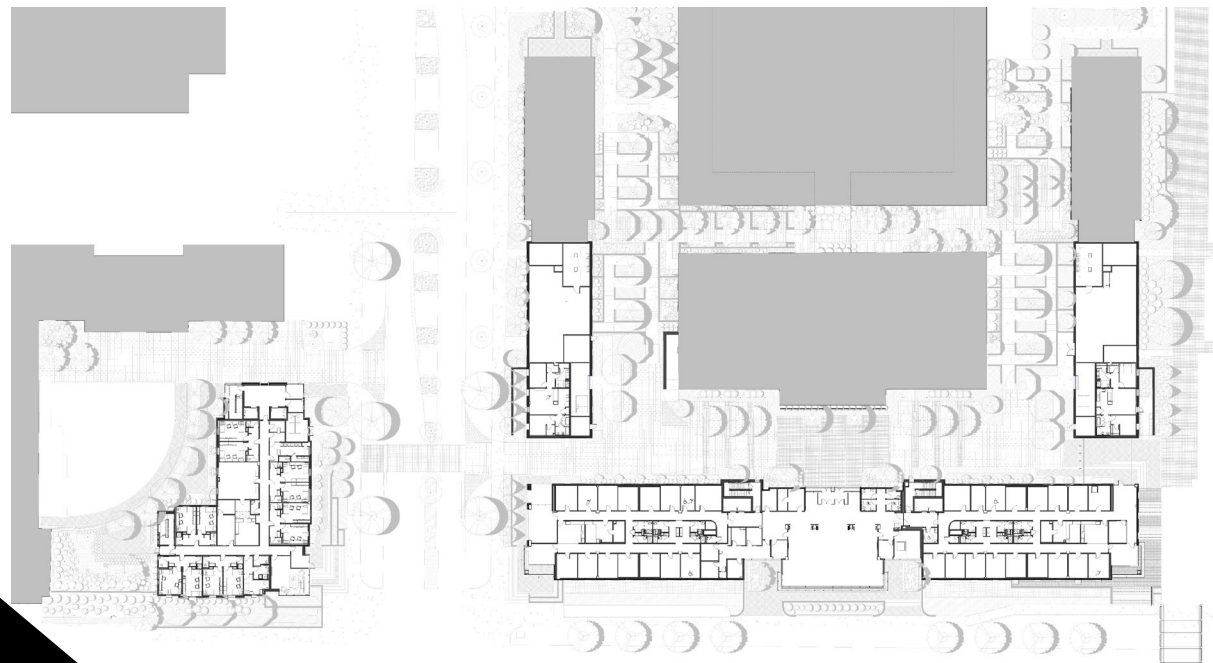
Unit Type	Beds
Double Traditional Rooms	656
Single (RA) Traditional Room	22
Triple Traditional Room	66
4 Bed Suite (2 double rooms)	304
4 Bed Suite (Single/ Triple rooms)	32
Single suite (RA)	6
Total	1086

HONORS COLLEGE RESIDENCE HALL



THOMAS
COOPER
LIBRARY

SPECIAL
COLLECTIONS
LIBRARY



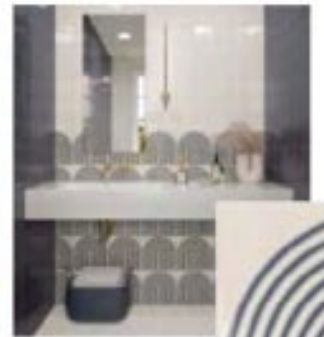
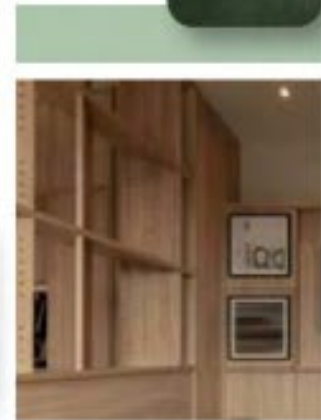








VIBRANT
WELCOMING



DISTINCTLY
CAROLINA

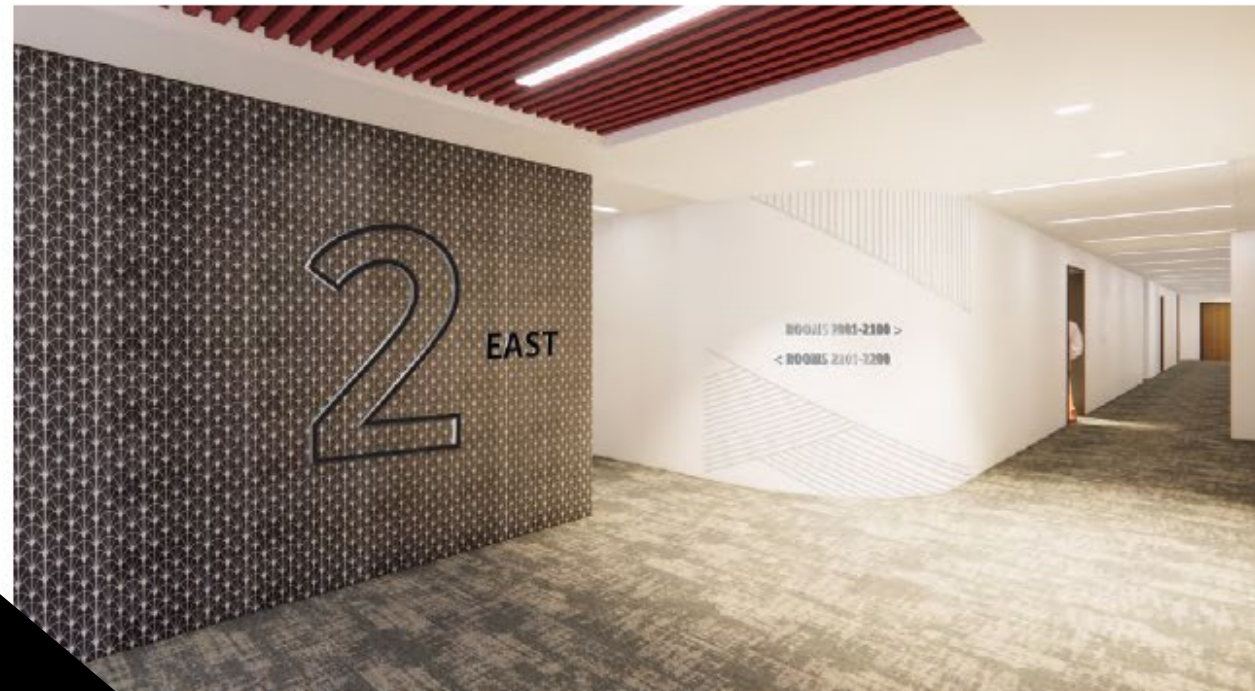
INSIDE THE HUB



WELCOME TO THE COMMONS AT CAROLINA



INSIDE THE HUB



INSIDE THE HUB

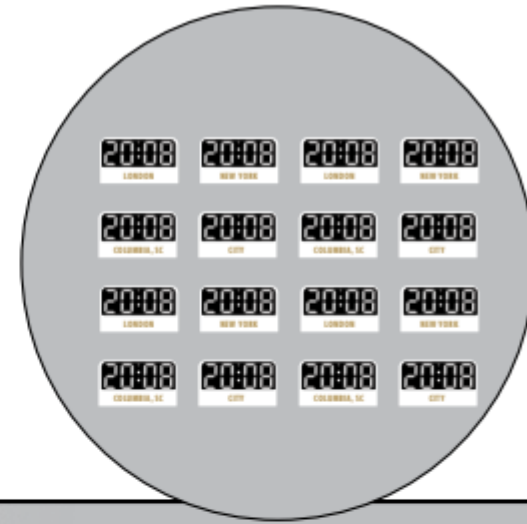


INSIDE THE HUB



Business Corridor

Large scale duotone supergraphic layered behind perforated metal world map with digital clocks. Pegs used to mark locations of financial destinations.



BUSINESS CORRIDOR



KEY PLAN



REFERENCE IMAGE

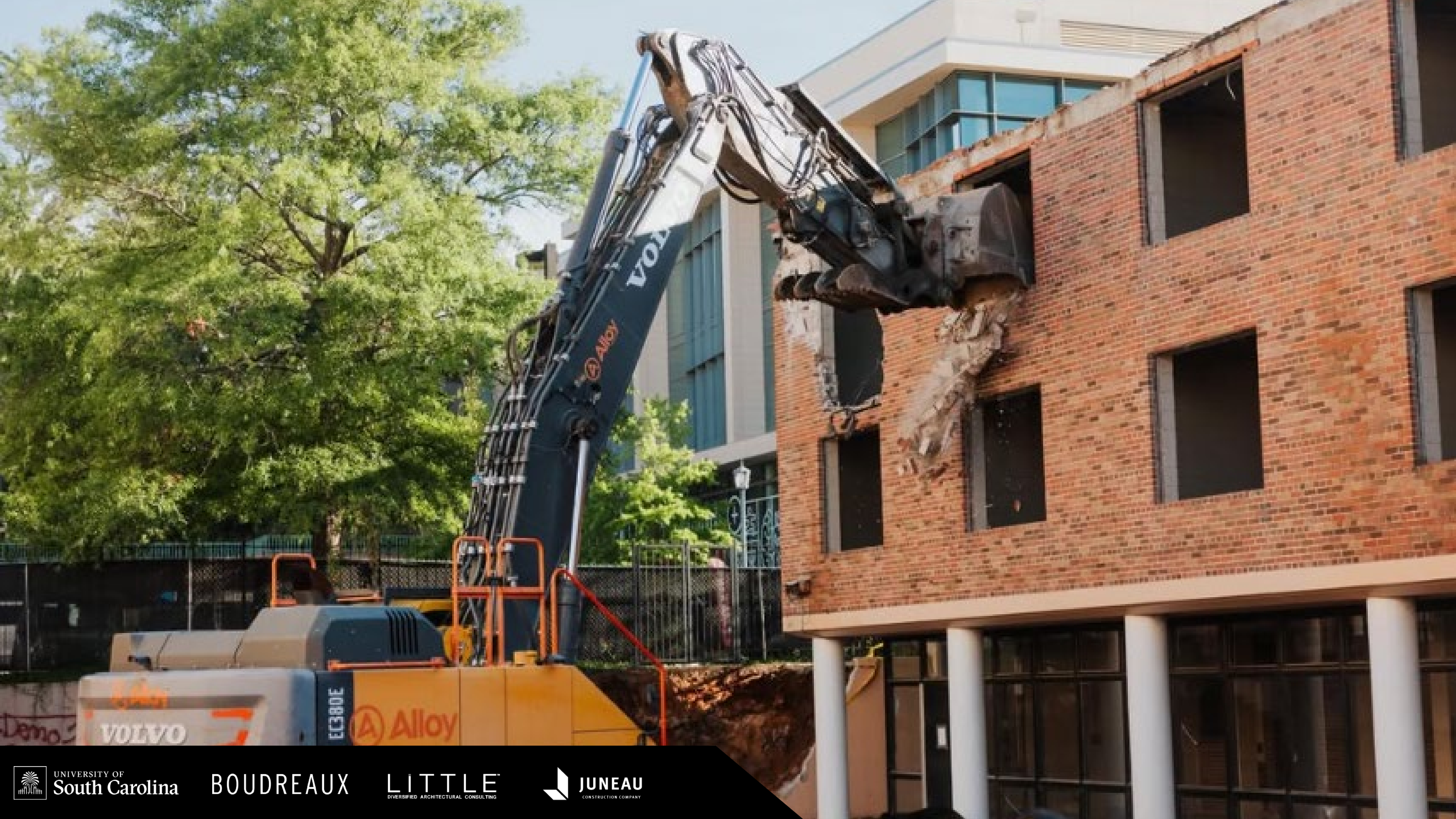


INSIDE THE HUB



-0.17	EUR/AUD	+0.036	USD/CHF	+0.016	USD/GBP	-0.1
-1.85 %	1.7873	+2.18 %	0.8685	+1.95 %	0.7525	-0.1

EUR/GBP	+0.070	EUR/INR	+0.010
0.8545	+0.08 %	7.2795	+1.20 %

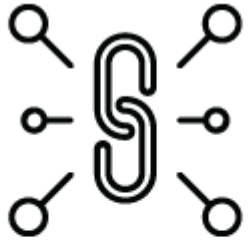




DESIGN DRIVERS

VISION STATEMENT:

To create a future-centric living + learning neighborhood in a way that nods to university history and tradition, while also redefining and activating connections so that students and faculty feel engaged and inspired.



Provide a visual and interpersonal point of **connection**



Form a local neighborhood **identity** with University spirit



Cultivate a memorable and **impactful** student experience



Establish a destination for **creativity** and **exploration**



Redefine the boundaries between interior and exterior space



UNIVERSITY OF South Carolina

**REWIND FAST FORWARD:
INNOVATION IN A HISTORIC CAMPUS CORE**



BOUDREAUX

LITTLE
DIVERSIFIED ARCHITECTURAL CONSULTING

 **JUNEAU**
CONSTRUCTION COMPANY