



# UNIVERSITY OF South Carolina

**REWIND FAST FORWARD:  
INNOVATION IN A HISTORIC CAMPUS CORE**



**BOUDREAUX + LITTLE**  
DIVERSIFIED ARCHITECTURAL CONSULTING



**JUNEAU**  
CONSTRUCTION COMPANY



**April Barnes, EdD**  
Assistant Vice President  
of University Housing



**Thomas Carlson-Reddig**  
“TCR”, AIA, LEED AP  
Community Practice Leader



**Justin Abrams, AIA**  
Vice President  
Architecture



**Alex Hale**  
Project Director  
Construction



# UNIVERSITY OF South Carolina

- Introduction to the USC Housing System
- Key Challenges
- Residential Student Experience





# UNIVERSITY OF **South Carolina**

- 40,000 Plus Students
- 9991 Beds
- 7,829 First-Year Students
- Continued Growth of First-Year Class





University of South Carolina | Sumter Street Residences



SUMMIT STREET

BLOSSOM STREET



**2.3 Acre  
Total Site**



**\$161 Million  
Construction Cost**



**1086 Beds**

## **HONORS COLLEGE**



**New 6 Story  
Residential Building  
55,400 square feet**

## **SUMTER STREET RESIDENCE**



**New 6-7 Story  
Residential Buildings  
240,750 square feet**





Fostering Core Campus Connections



**COLLABORATIVE PARTNERSHIPS**

**STRATEGIC PRIORITIES**

**DECISION MAKING**



Historic USC Campus



USC - Sumter Hall

Existing Conditions

*USC SUMTER STREET RESIDENTIAL*

*SITE CONTEXT: CAMPUS*

SPECIAL COLLECTIONS LIBRARY

HONORS RESIDENCE HALL

SUMTER STREET

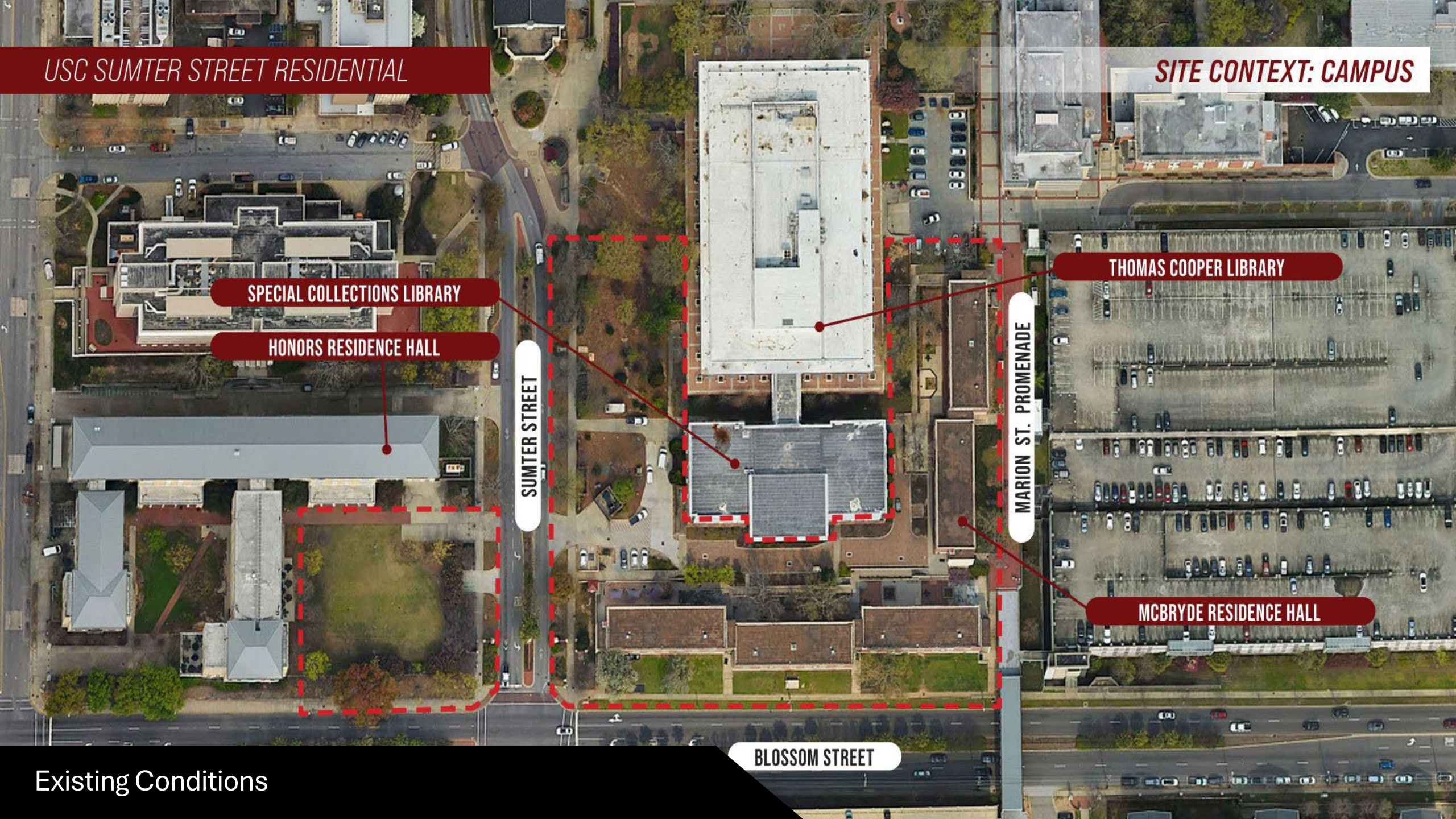
MARION ST. PROMENADE

THOMAS COOPER LIBRARY

MCBRYDE RESIDENCE HALL

BLOSSOM STREET

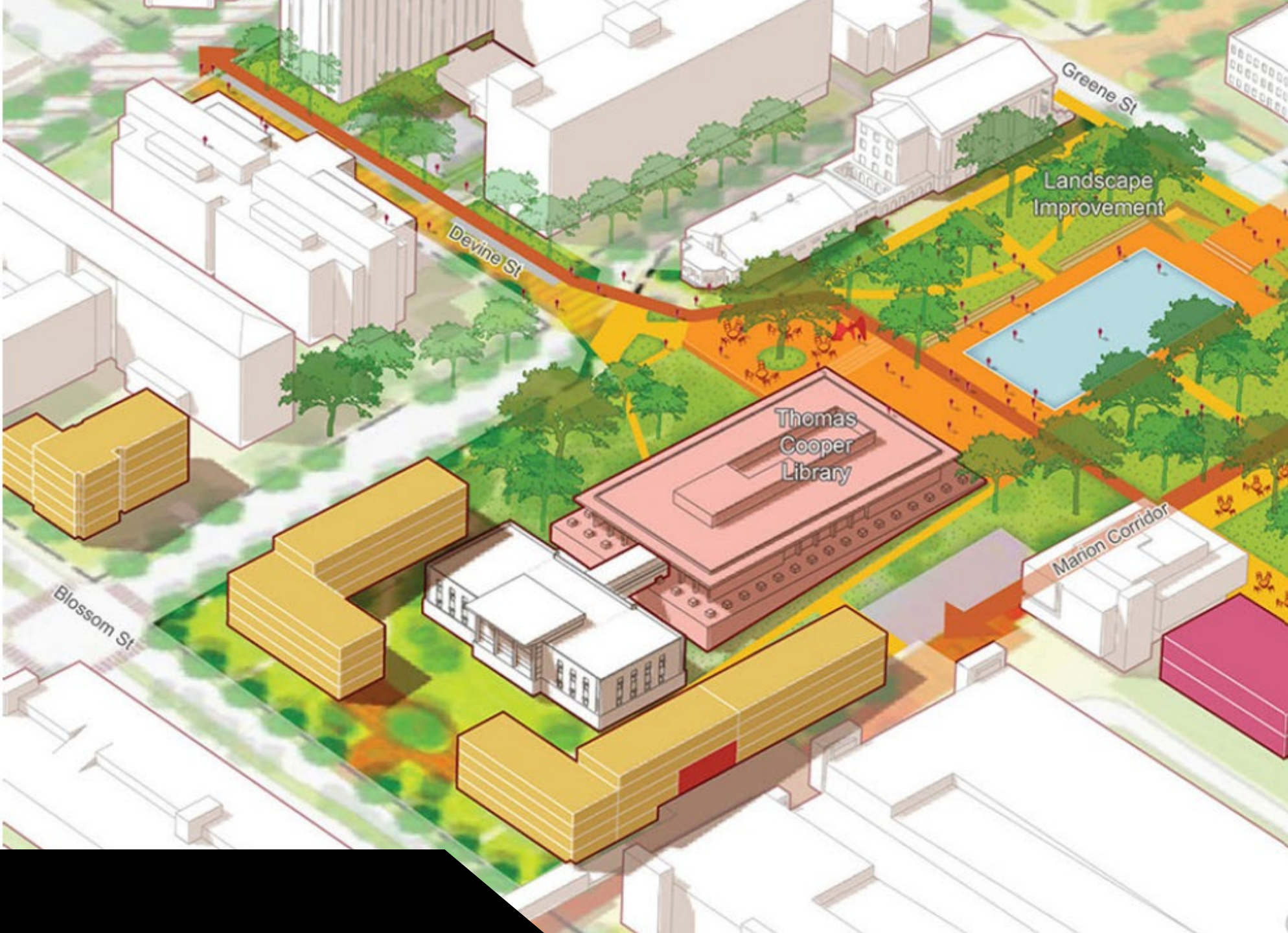
Existing Conditions





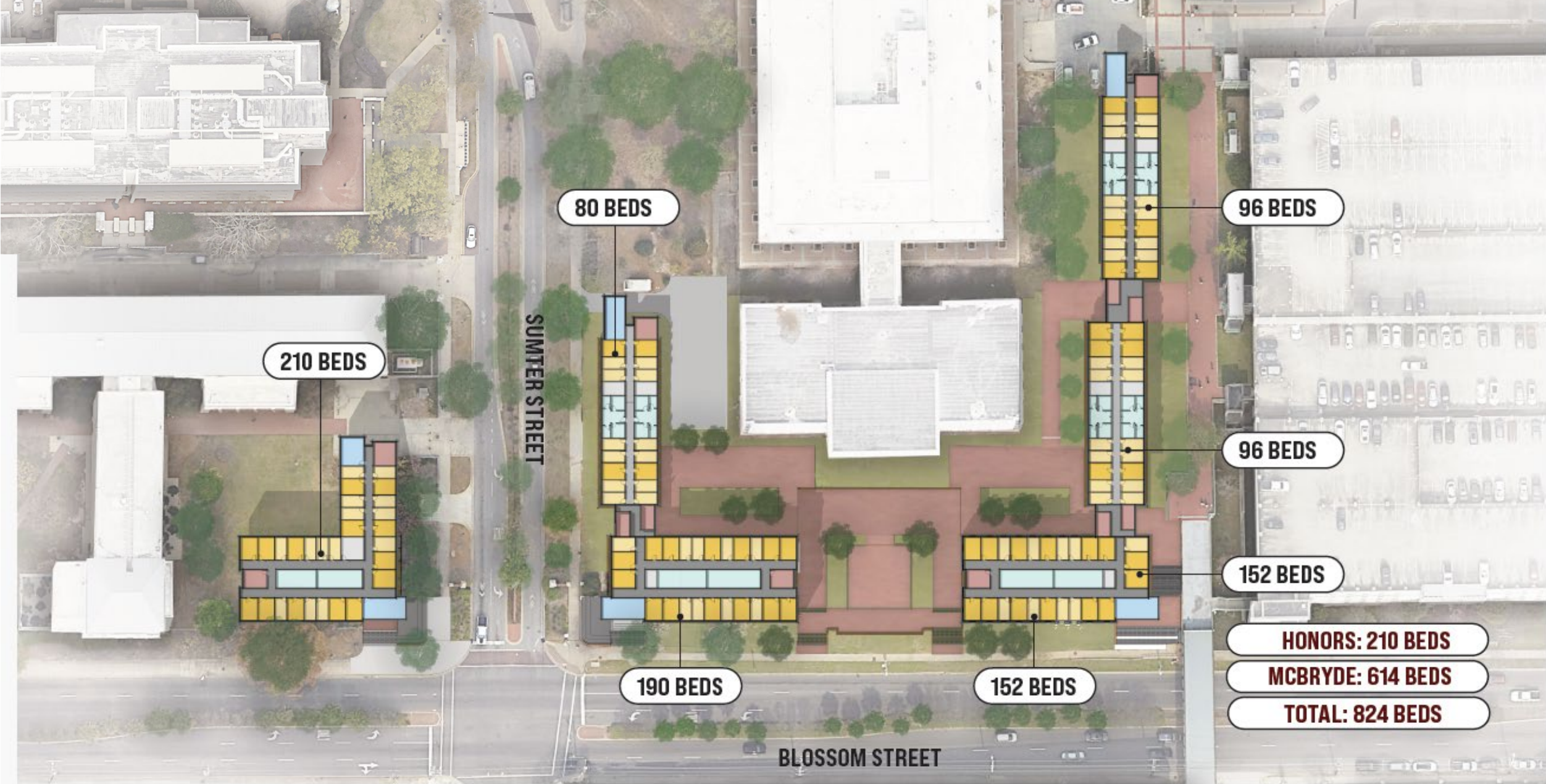
- USC Campus Architect
- USC Facilities Staff
- USC Housing Leadership
- Housing and LLC Staff
- Student Engagement
- USC Student Affairs
- Finance Department
- SC Office of the State Engineer
- USC Design Review board
- City of Columbia Planning Department
- City of Columbia Design/ Development Review Commission
- General Contractor (Juneau)

**IMPROVE  
STUDENT LIFE  
EXPERIENCE**



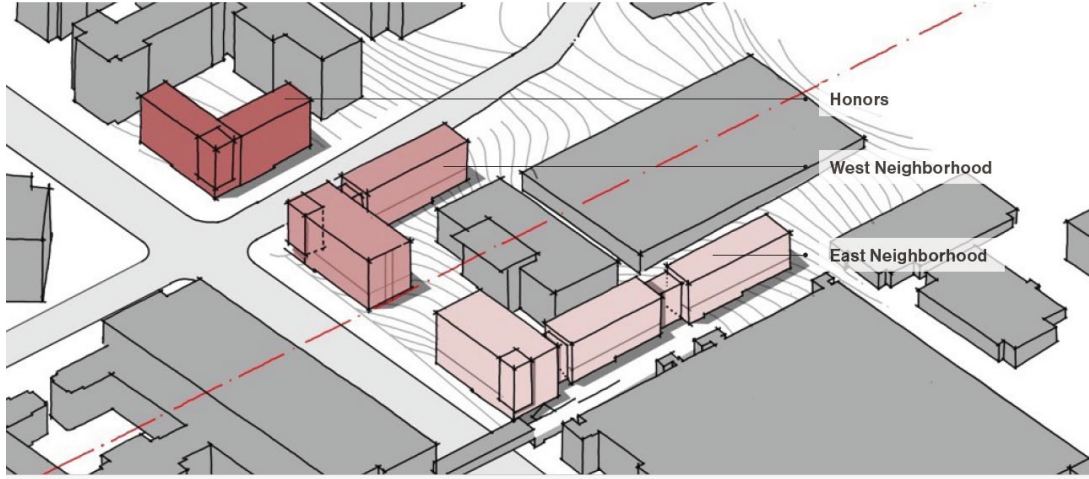


# Architectural Context of Precinct

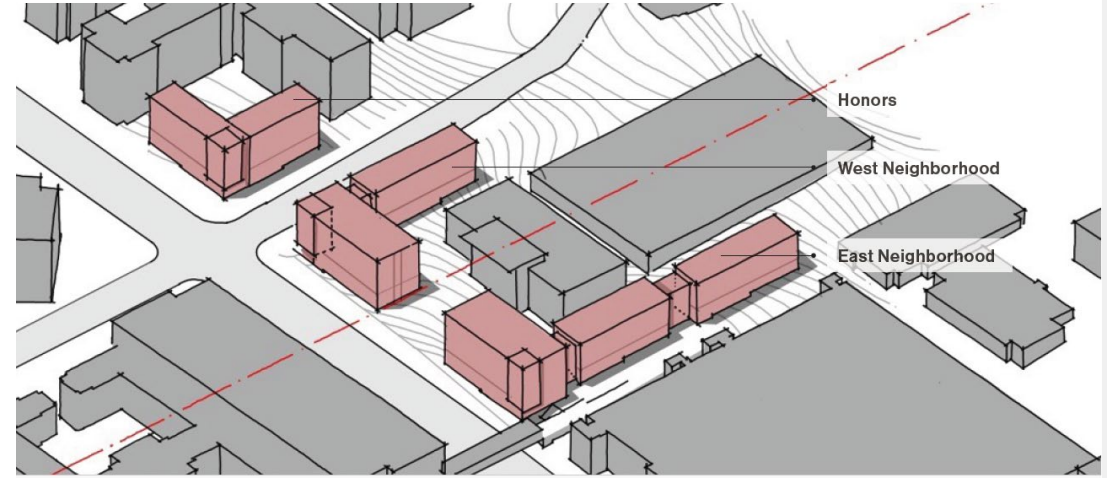


Composite Site Plan

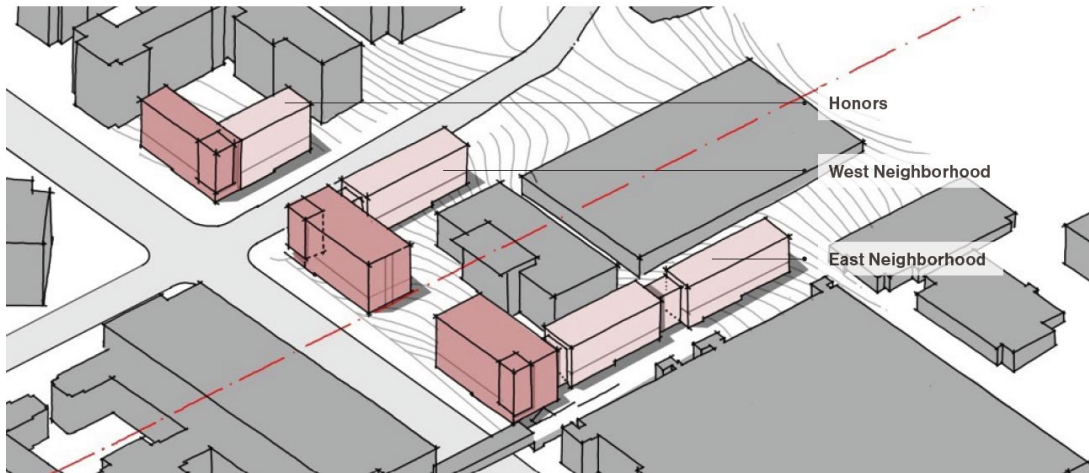
Celebrating USC  
**Connecting to Campus - Neighborhoods**



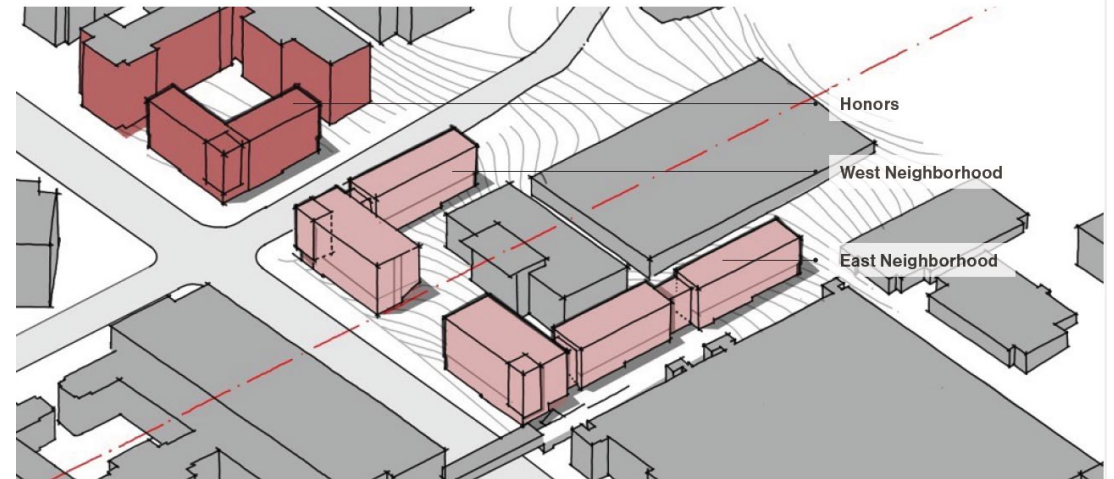
Celebrating USC  
**Connecting to Campus - Unified Language**



Celebrating USC  
**Connecting to Campus - Blossom Promenade**



Celebrating USC  
**Connecting to Campus - Honors & Library Precincts**

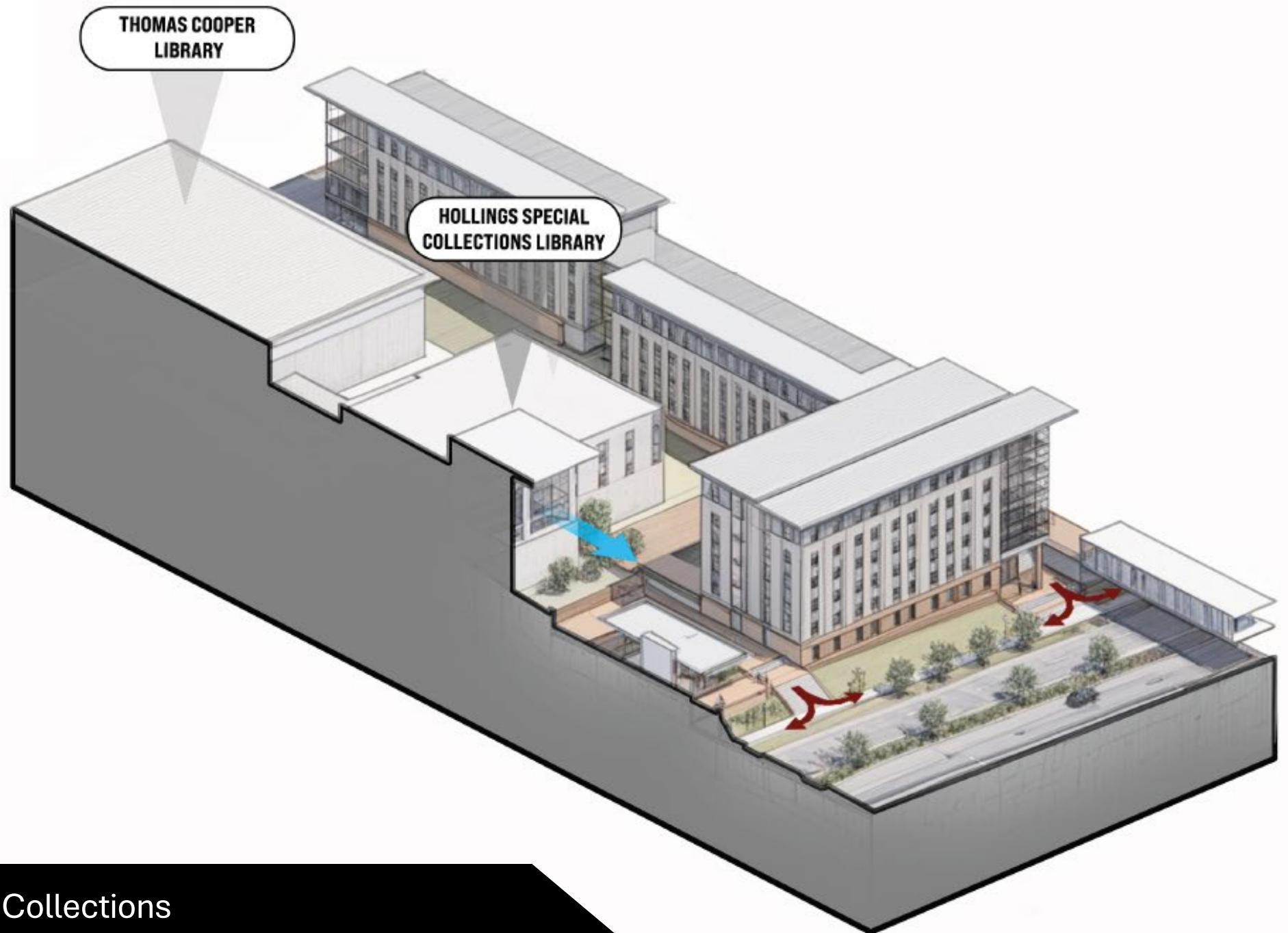




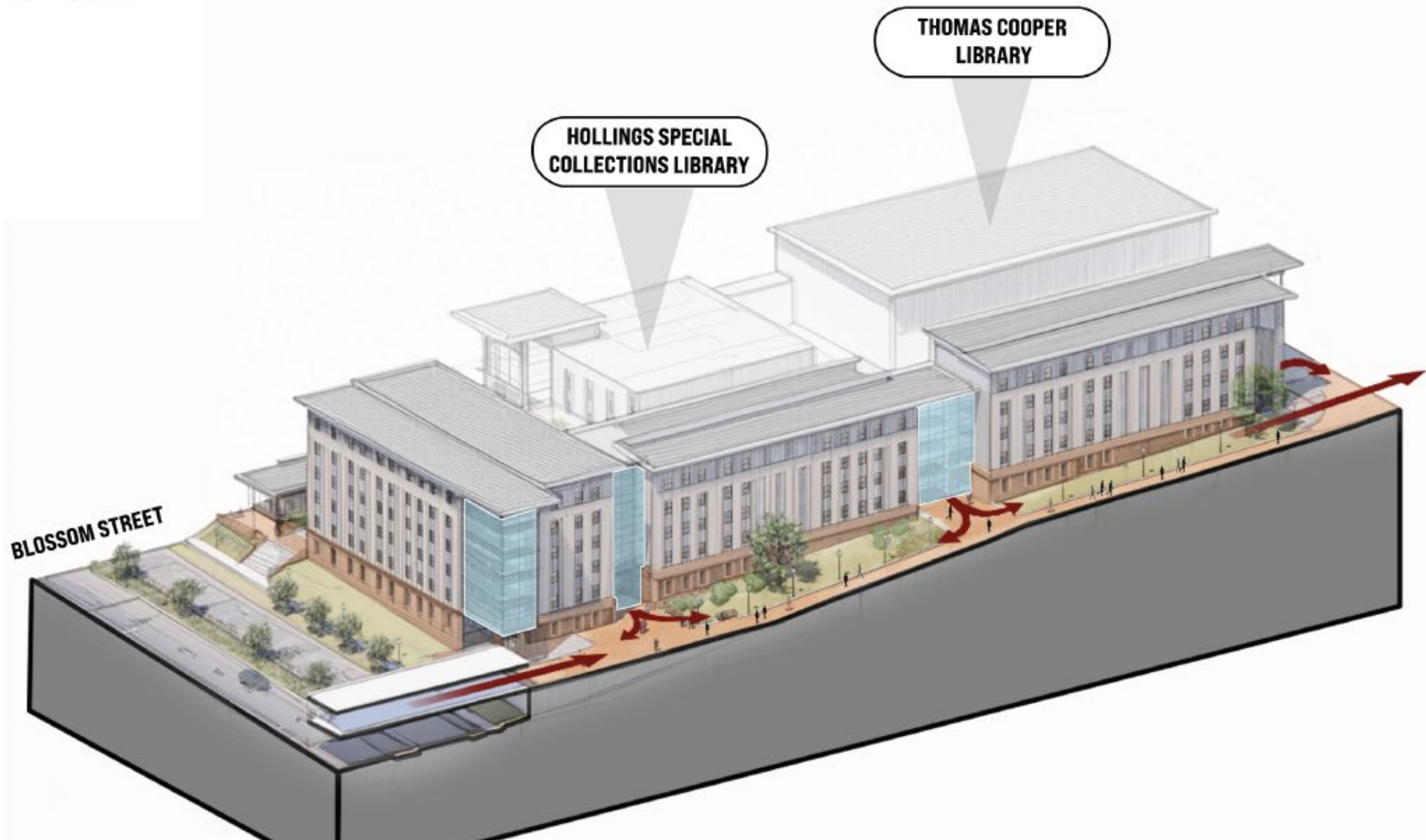
Potential Hub



Potential Hub



Views from Special Collections



**BLOSSOM STREET**

**HOLLINGS SPECIAL  
COLLECTIONS LIBRARY**

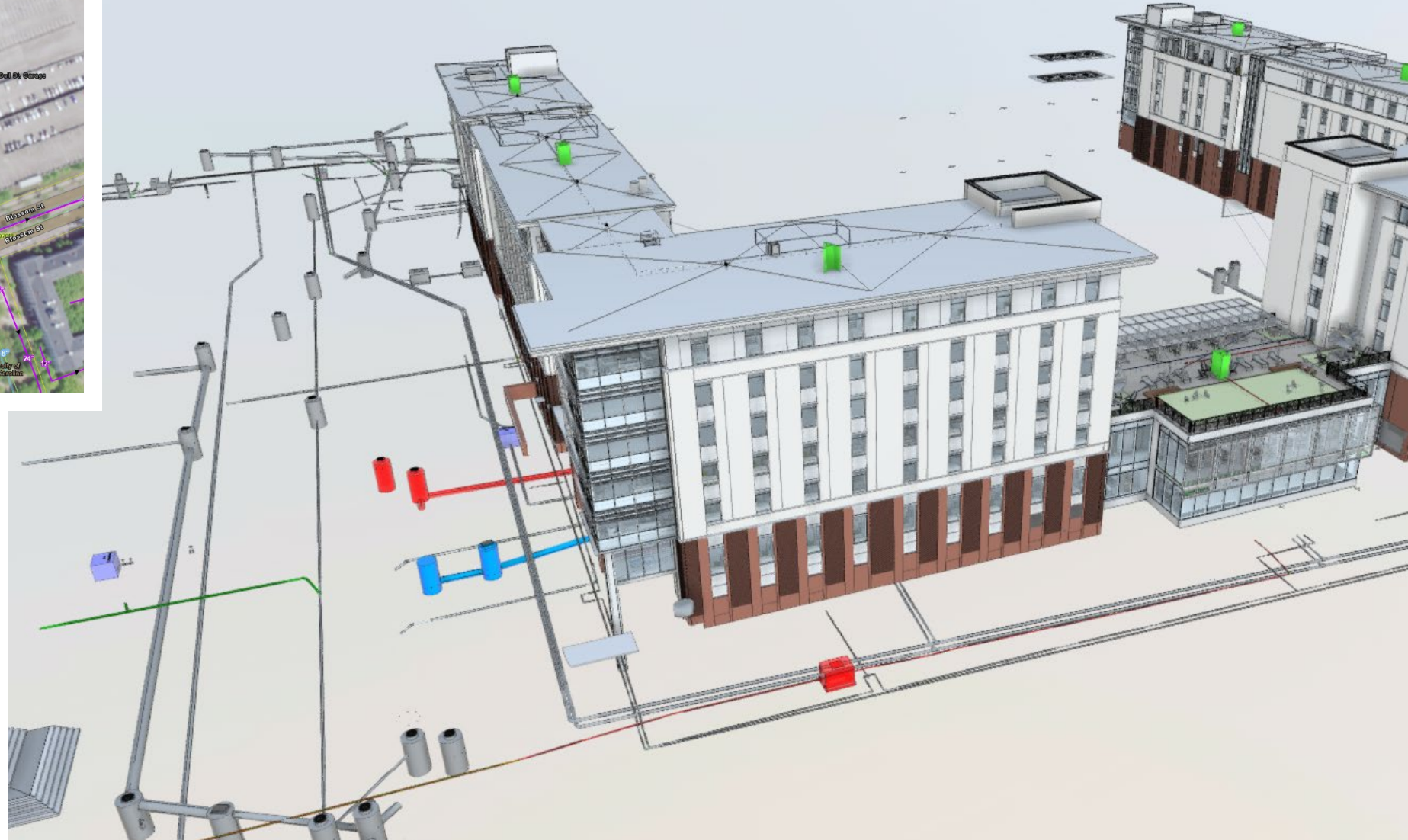
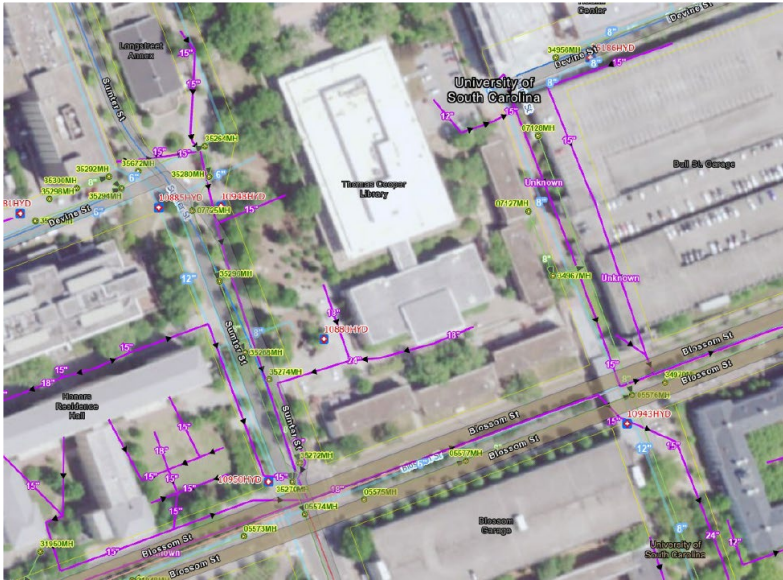
**THOMAS COOPER  
LIBRARY**

**Marion Street Promenade**



Topography





Existing Utility Replacement & Campus Connections

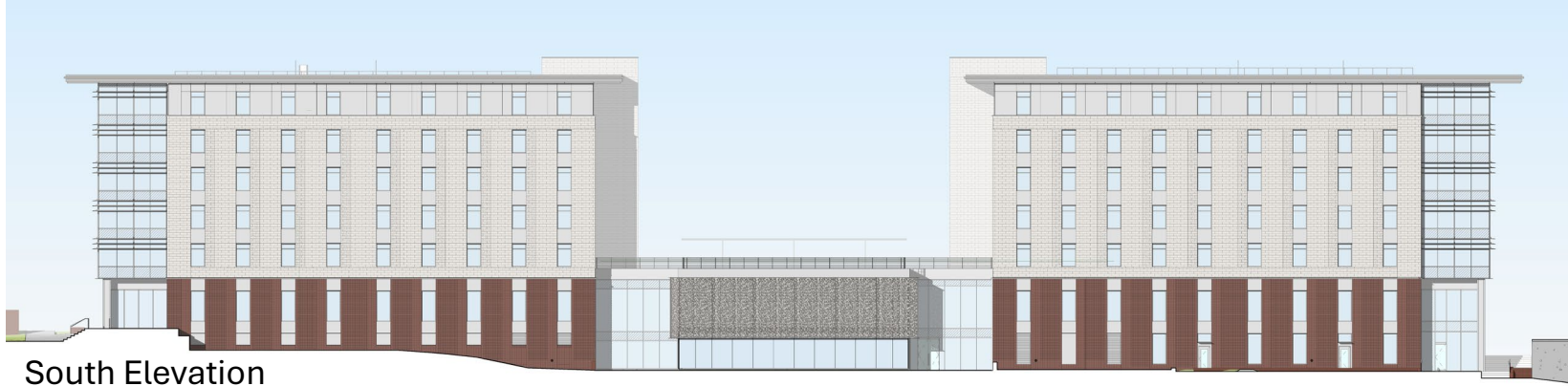


DESIGNING FOR

THE FUTURE



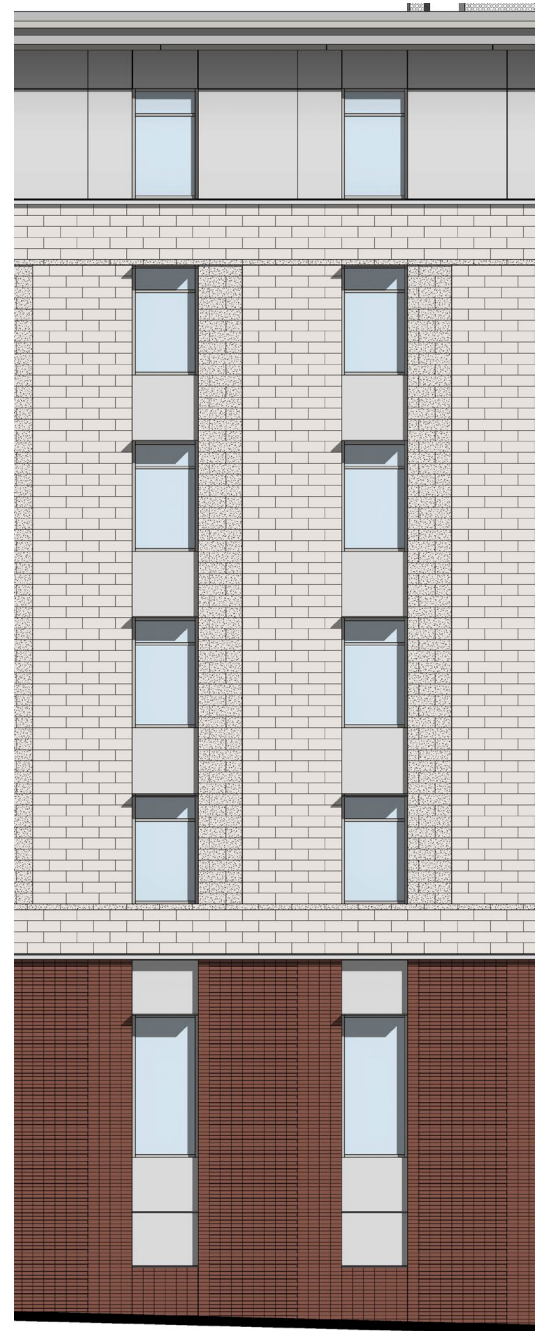
Gateway Project



South Elevation



West Elevation



Façade detail



Creating a Campus Gateway



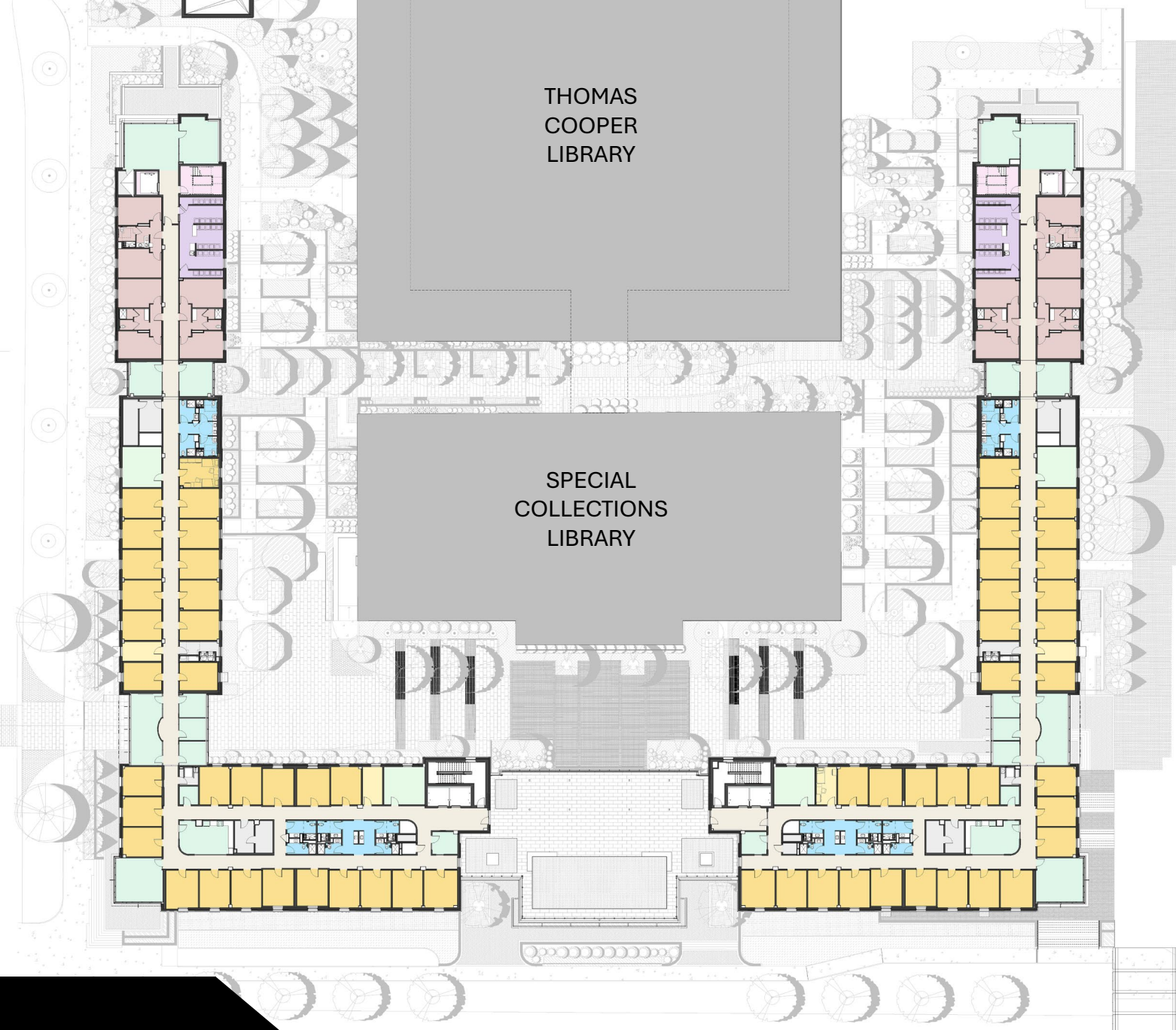
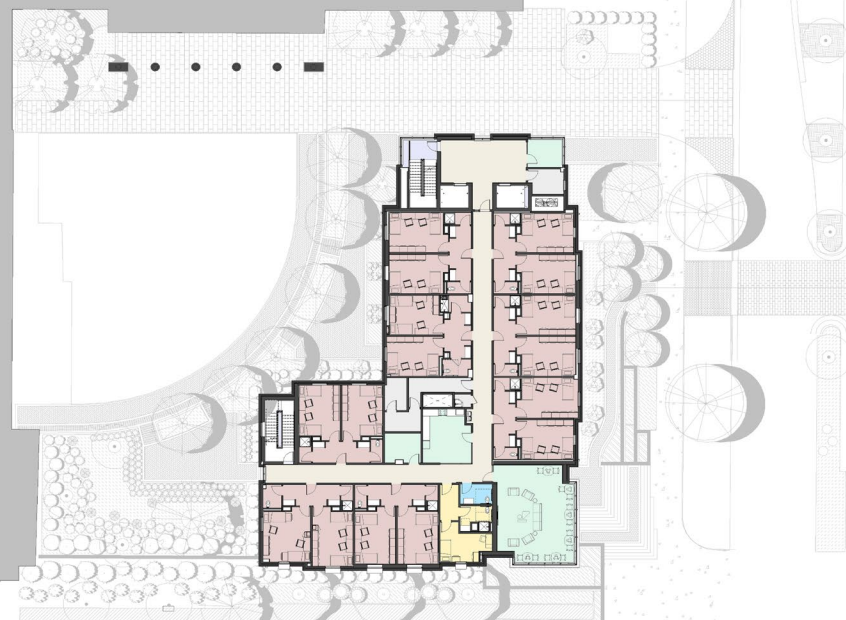
Sumter Street Residences Lanterns

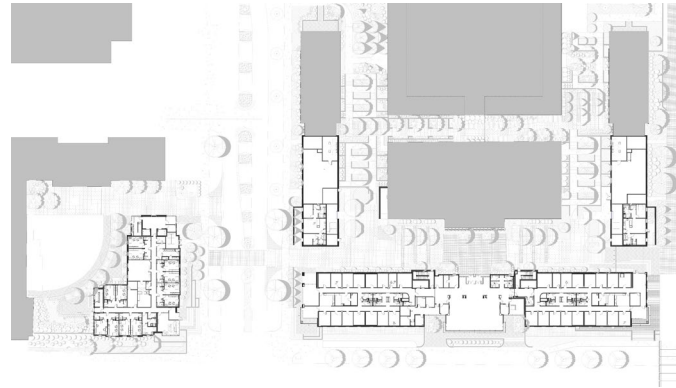


Sumter Street Residences Lanterns

Unit Type	Beds
Double Traditional Rooms	656
Single (RA) Traditional Room	22
Triple Traditional Room	66
4 Bed Suite (2 double rooms)	304
4 Bed Suite (Single/ Triple rooms)	32
Single suite (RA)	6
<b>Total</b>	<b>1086</b>

HONORS COLLEGE RESIDENCE HALL





Sumter Street Residences





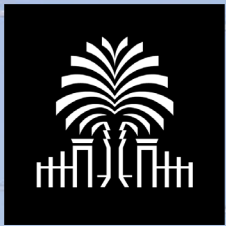




Inside the Hub



**ENGAGEMENT ACTIVITY**



# UNIVERSITY OF South Carolina

**REWIND FAST FORWARD:  
INNOVATION IN A HISTORIC CAMPUS CORE**



**BOUDREAUX + LITTLE**  
DIVERSIFIED ARCHITECTURAL CONSULTING



**JUNEAU**  
CONSTRUCTION COMPANY